



Growing the Cambridge Biomedical campus:

New hospitals accelerating specialist research

Public Open Evening 20 November 2019



from 6.00pm to 7.30pm

doors open at 5.30pm with networking until 8.00pm

Join us for an evening of updates and insights into how the new developments will support cutting-edge clinical research at the Cambridge Biomedical Research Centre



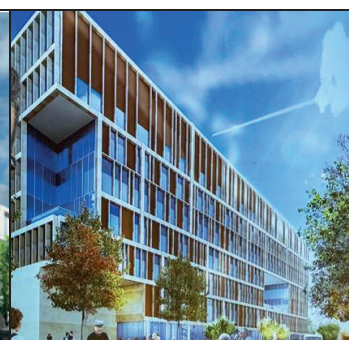
Heart and Lung
Research Institute
linked to Royal
Papworth Hospital



Jeffrey Cheah
Biomedical
Research Centre



Cambridge
Children's



Cancer Research
Hospital

How to book

Register on Eventbrite
<https://bit.ly/2ZxiXN8>

venue

CRUK
Cambridge Research Institute,
Li Ka Shing Centre,
Robinson Way, CB2 0RE

more info

contact Georgina
01223 254608
gan23@medschl.cam.ac.uk



@CambridgeBRC

www.cambridgebrc.nihr.ac.uk